

Optimal Economic Dispatch Using Particle Swarm Optimization in Sulsebar System

by Muhammad Ruswandi

Submission date: 24-Aug-2021 05:47PM (UTC-0500)

Submission ID: 1635476306

File name: IJAI_Rev2.docx (267.53K)

Word count: 3512

Character count: 19150

Optimal Economic Dispatch Using Particle Swarm Optimization in Sulselrabar System

Marhatang¹, Muhammad Ruswandi Djalal²

¹Energy Conversion Study Program, Department of Mechanical Engineering, State Polytechnic of Ujung Pandang

²Energy Power Plant Study Program, Department of Mechanical Engineering, State Polytechnic of Ujung Pandang

Article Info

Article history:

Received Jun 12, 201x

Revised Aug 20, 201x

Accepted Aug 26, 201x

Keywords:

Economic Dispatch

Particle Swarm Optimization

Ant Colony Optimization

Lagrange

Losses

ABSTRACT (10 PT)

In this study, a smart method based on Particle Swarm Optimization (PSO) based, proposed, is used to optimize the cost of generating thermal plants in the South Sulawesi system. The study was conducted by analyzing several methods using the Lagrange Method, Ant Colony Optimization (ACO) and PSO. From the results of the analysis, the PSO algorithm converges on the 11th iteration algorithm with the lowest generation cost obtained, which is Rp. 129687962.17 / hour. While the ACO algorithm converges on the 34th iteration with a generation cost of Rp. 131,473,269.39 / hour. The results of optimization using PSO produce a total thermal power of 400.75 MW and losses of 26.15 MW. The PSO method is able to reduce the cost of generating the South Sulawesi system by Rp. 11,118,312.07 / hour or 7.9%. While using the ACO method generates a generation cost of Rp. 131,473,269.39 / hour to generate power of 400,812 MW with losses of 26,219 MW. The ACO method is able to reduce the cost of generating the South Sulawesi system by Rp. 9,333,004.9 / hour or 6.62%. From the analysis results obtained PSO algorithm provides the lowest cost calculation of generator compared with conventional methods and ACO smart methods. This is also shown in the calculation process, the PSO method completes calculations faster than the ACO method.

This is an open access article under the [CC BY-SA](#) license.



Corresponding Author:

Marhatang,

Energy Conversion Study Program, Department of Mechanical Engineering,

State Polytechnic of Ujung Pandang,

Jl. Perintis Kemerdekaan KM.10, Makassar 90245, Indonesia.

Email: marhatang@poliupg.ac.id

1. INTRODUCTION

In a power plant center, good management is needed in regulating the loading and the amount of power that must be sent by the generator into the system. Operational management the power plant is very important, especially in thermal plants that operate with fuel to drive turbines. Changes in the load on the electric power system will encourage additional fuel consumption per unit time in thermal power plants to produce electricity, this is commonly referred to as the input-output characteristics of the generator. The increasingly expensive fuel costs in thermal generators need to be optimized for use, so that minimum costs are obtained. [1].

The Sulselrabar system operates at 150 kV and consists of 46 transmission lines. This system connects load centers in Sulselrabar such as the capital city of Makassar, Pare-Pare and several districts such as Maros, Pangkep, and others. The Sulselrabar system has 37 buses and consists of several thermal and non-thermal generators. For thermal generators there are 12 generating units and 4 hydro or non-thermal generating units

[2]. The Sulselrabar system is a large system so a comprehensive study is needed so that it can support the system's performance.

Research on the Sulselrabar system produces good reports, such as: stability system [1-7], load forecasting [8, 9], and economic dispatch [10, 11]. Specifically in the study [10] carried out optimization of economic dispatch using the Ant Colony artificial intelligence method. Currently, the implementation of intelligent methods in electric power systems is increasingly being used as a substitute for conventional methods.

In this research, a study on the South Sulawesi electricity system will be proposed, namely economic loading (Economic Dispatch). In previous studies, previous economic dispatch studies have been conducted. Some of these studies produce a combination of economic loading for generating units in the South Sulawesi system. But the development of the system and also the emergence of several new optimization methods, we need a further study of economic dispatch.

Particle Swarm Optimization (PSO) method is an undeterministic method or smart method. PSO is an evolutionary computational technique, in which the population in the PSO is based on an algorithm search and begins with a random population called a particle. The application of PSO as an economic dispatch optimization method has been investigated by [12-16]. The study discusses the implementation of the PSO algorithm to solve economic dispatch problems. Previous research on Economic Dispatch in the South Sulawesi system has been conducted. In research [11] discusses economic dispatch using the Particle Swarm Optimization (PSO) method. From the results of the study the generator data used did not cover all of the generators in the system, especially thermal plants. The Sulselrabar system has now developed with the addition of several thermal plants. In research [10], the implementation of the Ant Colony algorithm is explained as an optimization method. From the results of this study obtained the old Ant Colony computing process. In addition, the optimization results obtained are not so significant with the calculation process using the conventional Lagrange method. In [13, 15] discusses the implementation of the PSO in calculating the cost of generation in a multi-engine system, and shows optimal results in tuning. In research [14] discusses the optimization of generation costs in small systems with a case study of a 9 bus system and 3 generators. Research on small scale systems has also been carried out by [17], who discusses the implementation of economic dispatch in microgrid systems.

This research will propose a new approach for optimization of generation costs in large multinational systems, especially in the South Sulawesi system, taking into account transmission losses and taking into account the limits of plant equality and inequality. To produce economical generating costs by taking into account the limits of equality and inequality [12].

2. RESEARCH METHOD

Optimal operation of the generator must pay attention to equality constraints and inequality constraints. Equality constraint is the power limit generated by each generator which is equal to the total load requirement and transmission losses, expressed by the following equation:

$$\sum_{i=1}^N P_i = P_R + P_L \dots\dots\dots (1)$$

Where:

- P_i = Generator output power (MW)..
- P_R = Total load (MW).
- P_L = Transmission losses (MW).

While the Inequality constraint is the output power produced by the generator that must be greater than or equal to the minimum permitted power and less than or equal to the maximum permitted power.

$$P_{i \min} \leq P_i \leq P_{i \max} \dots\dots\dots (2)$$

$$P_L = \sum_{i=1}^N \sum_{j=1}^N P_i B_{ij} P_j + \sum_{i=1}^N B_{i0} P_j + B_{00} \dots\dots\dots (3)$$

Where:

- P_L : Losses.
 - B_{ij} : Losses coefficients.
 - P_i , P_j : Generator output
 - B_{i0} , B₀₀ : Losses constant
- Loss coefficients can be considered constant for changes in the output power of each generator in the system.

Particle Swarm Optimization

Particle Swarm Optimization (PSO) is an artificial intelligence method that was discovered in 1995. This algorithm works by adopting the movement behavior of a flock of birds or fish in search of food so that it can be applied to scientific and engineering research methods. The main advantages of the PSO algorithm are simple algorithm structure, easy to use, easy to set parameters, and very good efficiency [10]. The weight improvement function is determined by the following equation.

$$w(t) = (w_{max} - w_{min}) \times \frac{iterasi_{max} - iterasi(t)}{iterasi_{max}} + w_{min} \dots\dots\dots (4)$$

Where:

- W(t) : Weight
- W_{max} : Maximum weight value
- W_{min} : Minimum weight value
- Iter_{max} : Maximum Iteration
- Iter(t) : Iteration

Inertia weight values are usually set between 0.4 and 0.9. The concept of inertia weight was developed by Shi and Eberhart in 1998 which inspired the modification of particle velocity and position using the adjustable inertia weight parameter. Velocity and particle position equation:

$$V_{ij}^t = \omega x V_{ij}^{t-1} + c_1 x r_1 x (P_{bestij}^{t-1} - X_{ij}^{t-1}) + c_2 x r_2 x (G_{besti}^{t-1} - X_{ij}^{t-1}) \dots\dots\dots (5)$$

For I = 1,2,..., N_D; j=1,...,N_{par}

Where:

- t : Calculate iteration
- V_{ij}^t : The ij dimension of the particle velocity at iteration t.
- X_{ij}^t : The ij dimension of the particle position in the iteration t.
- ω : Weight of inertia
- c₁, c₂ : Positive acceleration coefficient
- P_{bestij}^{t-1} : The ij dimension from the best position is reached until iteration t-1
- G_{bestij}^{t-1} : Dimension I of all best positions is achieved until t-1 iteration
- N_D : Number of decision variables
- N_{par} : Number of swarm
- r₁, r₂ : Random numbers are evenly distributed in the range [0,1]; the latest value is generated at any time.

PSO was developed based on the following model:

- a. When a bird approaches a food source, it will quickly send information to other birds.
- b. After receiving the information, the other birds follow in groups.

PSO parameters used include:

- Number of swarms = 30
- Number of variables = 16
- Maximum iteration = 50
- Social constant = 0.5
- Cognitive constant = 0.01
- Inertia (w) = 0.01

While the ACO parameters include:

- Number of ants = 10
- Max Iteration = 100
- Alpha = 0.9

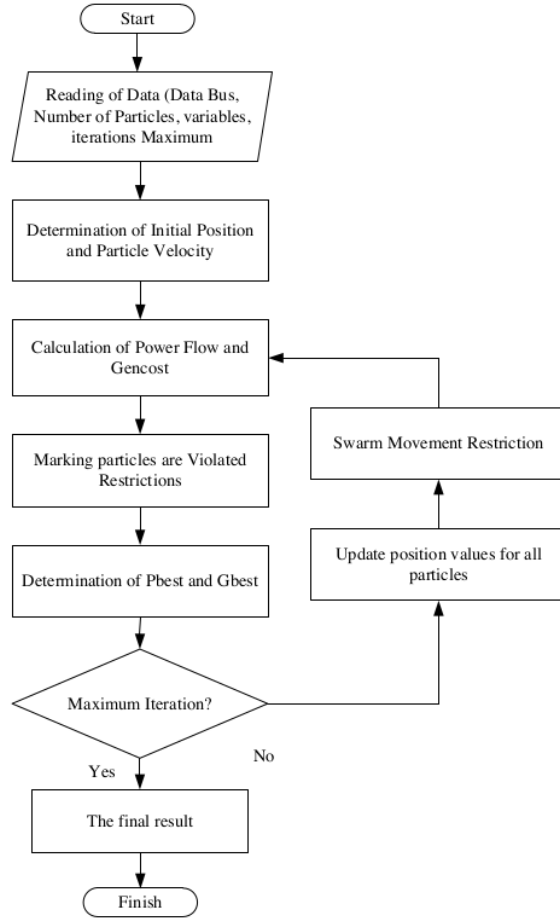


Figure 2. Particle Swarm Optimization Flowchart

3. RESULTS AND ANALYSIS

In this study, the completion of economic dispatch uses several methods including the conventional Lagrange method, the Ant Colony Optimization method, and the proposed method, namely Particle Swarm Optimization (PSO). The case study used is the Sulselrabar system. The algorithm performs computations to calculate the cheapest combination of thermal generation. In this study, 4 non-thermal power plants were maximized. The PSO algorithm works with the lowest cost generation objective function. The solution begins by calculating the input-output characteristics of the generator with the following equation.

$$C_t = \sum_{i=1}^{n_g} \alpha_i + \beta_i P_i + \gamma_i P_i^2 \dots\dots\dots(6)$$

To obtain stable generator performance, the operation of the generator should not exceed or be less than the generator capacity. Therefore, the generator power production must be limited by the equality constraint (eq.6) and the inequality constraint (eq.7).

$$\sum_{i=1}^{n_g} P_i = P_D \dots\dots\dots(7)$$

$$P_{i_{min}} \leq P_i \leq P_{i_{max}} \dots\dots\dots(8)$$

Thermal Generator Input-Output and Fuel Cost Characteristics

The computational process begins by calculating the input-output characteristics of the thermal generator. Then determine fuel cost equation by multiplying the input-output equation by the price of the fuel used. The results of the calculation of the input output characteristics and cost functions are shown in table 1 below.

Table 1. IO Characteristics & Cost Function

N ₁	Unit	Input-Output Equation (Liter/Jam)	Input-Output Equation (Liter/Jam)
1	PLTD Pare-Pare	$714.0000 + 567.4000P - 3.2941P^2$	$6211800 + 4936380P - 28658.67P^2$
2	PLTD Suppa	$2070 + 178.6P + 0.4P^2$	$18009000 + 1553820P + 3480P^2$
3	PLTU Barru	$2805.6 + 251.6P - 0.11976P^2$	$17675280 + 1585080P + 754.488P^2$
4	PLTU Tello	$558 + 174.5P + 1.375P^2$	$3515400 + 1099350P + 8662.5P^2$
5	PLTD Agrekko/T.Lama	$771.975 + 160P + 2.7397P^2$	$6716182.5 + 1392000P + 23835.39P^2$
6	PLTD Sgmnsa	$617.625 + 477.25P - 4.1667P^2$	$5373337.5 + 4152075P - 36250.29P^2$
7	PLTD Arena/Jenepono	$629.475 + 176.3P + 4.8052P^2$	$5476432.5 + 1533810P + 41805.24P^2$
8	PLTD Mateko/Bulukumba	$506.25 + 124.9P + 9.4444P^2$	$4404375 + 1086630P + 82166.28P^2$
9	PLTD Pajelasang/Soppeng	$432 + 66.2P + 12.5P^2$	$3758400 + 575940P + 108750P^2$
10	PLTGU Sengkang	$4418.89 + 38.0952P + 0.021898P^2$	$27839000.000 + 240000.00P + 137.9539P^2$
11	PLTD Malca/Makale	$165.75 + 409.5P + 5.7692P^2$	$1442025 + 3562650P + 50192.04P^2$
12	PLTD Palopo	$103.5 + 112.4P + 50P^2$	$900450 + 977880P + 435000P^2$

Analysis & Discussion

The case study used is based on previous research, in which the settlement method uses an intelligent ACO algorithm and the conventional Lagrange. Table 2 shows the real generation power and costs for the thermal unit of the South Sulawesi system at peak evening load before optimization and the comparison of the results of simulations carried out using the proposed method namely PSO algorithm, then compared with the ACO algorithm, and the Lagrange. The graph of convergence optimization of generation costs using PSO is shown in Figure 3.

Table 2 is a preliminary study of the calculation of generator costs before being optimized in a case study of peak evening loads, the generation load charged to the thermal unit of 435.3 MW, with a total generation cost of Rp. 140,806,274.24. Losses generated before optimization were 26,299 MW. The total system load is 532.3 MW. 4 Hydro power plant units bear respectively: Bakaru 126 MW, Pinrang 0.3 MW, Sinjai 3.5 MW, Bili-Bili 7.1 MW. Furthermore, by using the proposed method that is using a smart method based on PSO algorithm, the generation results are more optimal than the smart method based on ACO algorithm. As another comparison method in this research also used the conventional Lagrange. The complete optimization results are shown in table 2.

Table 2. The complete optimization results

Unit	Real		Lagrange		Ant Colony		PSO	
	P (MW)	Cost (Rp/hr)	P (MW)	Cost (Rp/hr)	P (MW)	Cost (Rp/hr)	P (MW)	Cost (Rp/hr)
1	20.1	9385464.873	19.40	9119159.49	18.50	8772640.01	10.50	5488737.86
2	62.2	12812016.72	31.98	7125923.05	60.03	12382534.57	59.73	12323912.16
3	44.7	10360370.52	44.00	10202568.76	41.40	9622921.45	33.55	7935567.73
4	29.7	4380719.96	19.80	2867857.65	17.80	2582845.65	28.38	4169183.92
5	19.3	4246022.69	19.00	4176875.82	21.88	4858396.36	18.39	4036545.83
6	12.3	5095955.36	27.60	9235658.65	29.20	9570548.02	19.08	7140357.97
7	19.6	5159900.95	23.86	6587284.55	13.36	3342993.46	18.66	4864960.35
8	9.0	2083951.36	6.30	1451132.36	11.94	2909265.78	9.35	2175760.65
9	15.1	3725118.15	14.56	3519839.04	11.52	2482548.48	11.24	2395951.36
10	192.9	79268321.18	184.38	76780078.63	166.10	71509642.44	188.35	77937456.65
11	3.5	1452615.24	3.730	1542902.63	3.520	1460445.24	2.02	885723.75
12	6.9	2835817.20	6.060	2280116.88	5.560	1978487.88	1.50	333803.93
Total	435.3	140806274.24	400.67	134889397.56	400.81	131473269.39	400.75	129687962.17

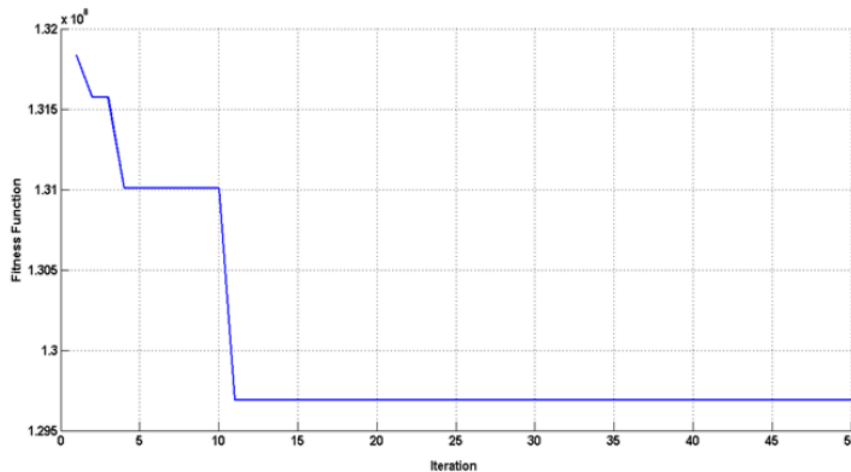


Figure 3. Graph of convergence optimization using Particle Swarm Optimization

Analysis

In the condition before optimization, the total cost of generation is Rp. 140,806,274.24/hour with a power of 432.3 MW and losses of 26,299 MW. The first optimization is done using conventional lagrange and generates a generation cost of Rp. 134,889,397.56/hour with a power of 400.67 MW and losses of 28.352 MW. From the results of these calculations, the cost of generation can be reduced to Rp. 5,916,876.7/hour or 4.2% at night peak load. The most expensive generation costs are obtained from the Sengkang PLTGU unit, which in the system functions as a slack bus, which is Rp. 76,780,078,632/hour, with a power of 184,380 MW. While the cheapest generation costs are obtained from the Matekko PLTD unit, which is Rp. 1,451,132,365/hour, with a power of 6.3 MW.

Next, use the Ant Colony Optimization (ACO) method. From the calculation results [10], CO converges on the 34th iteration with a generation cost of Rp. 131,473,269.39/hour. From the computational results, ACO generates a generation cost of Rp. 1,473,269.39/hour with a power of 400,812 MW with losses of 26,219 MW. From these results, ACO was able to reduce the generation cost of Rp. 9,333,004.9/hour or 6.62%. The most expensive generating unit of the Sengkang PLTGU produces the most expensive thermal generation cost of Rp. 71,509,642,449/hour with a power of 166,102 MW. While the cheapest thermal generating unit at the PLTD Malea Makale plant is Rp. 1,460,445,245/hour, with a power of 3,520 MW.

Figure 3 is a graph of the convergence of calculations using PSO. The calculation process is carried out for 50 iterations, and in the 11th iteration the PSO algorithm has found the cheapest generation cost, which is Rp. 129,687,962.17/hour with a power of 400.75 MW and losses of 26.15 MW. From these results, PSO was able to reduce the generation cost of Rp. 11,118,312.07/hour or 7.9%. The Sengkang PLTGU generating unit produces the most expensive thermal generation costs, namely Rp. 77,937,456.65/hour, with a power of 188.35 MW. While the cheapest thermal generating unit at the Palopo PLTD plant is Rp. 333,803.93/hour, with a power of 1.5 MW.

From the results of the analysis, the PSO algorithm gives the cheapest generation cost calculation results compared to the conventional method and the smart ACO method. This is also shown in the calculation process, the PSO method is faster in completing the calculation than the ACO method. Losses produced by the PSO method are smaller than other methods. Figure 8 shows a comparison of the generation costs at night peak load for each method.

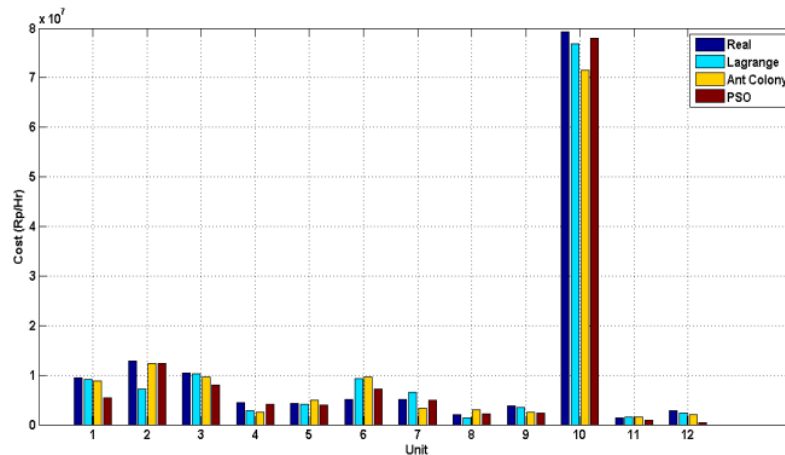


Figure 4. Comparison of the costs of generating peak evening loads

4. CONCLUSION

From the analysis results, the PSO computation process algorithm converges on the 11th iteration, where the PSO algorithm has found the cheapest generation cost of Rp. 129687962.17 / hour. While the ACO algorithm converges on the 34th iteration with a generation cost of Rp. 131,473,269.39 / hour.

From the results of the analysis using the conventional Lagrange of generation costs Rp. 134,889,397.56 / hour with active power 400.67 MW and losses of 28.352 MW. The ACO generates a total generation cost of Rp. 131,473,269.39 / hour with active power of 400,812 MW and losses of 26,219 MW. Using the PSO method generates a total generation cost of Rp. 129,687,962.17 / hour with active power 400.75 MW and losses of 26.15 MW.

The Lagrange is able to reduce the cost by Rp. 5,916,876.7 / hour or 4.2%. Ant Colony is able to reduce the cost by Rp. 9,333,004.9 / hour or 6.62%. Particle Swarm Optimization is able to reduce the cost by Rp. 11,118,312.07 / hour or 7.9%.

8

ACKNOWLEDGEMENTS



This work was supported by State Polytechnic of Ujung Pandang.

REFERENCES

- [1] M. R. Djalal, A. Imran, and I. Robandi, "Optimal placement and tuning power system stabilizer using Participation Factor and Imperialist Competitive Algorithm in 150 kV South of Sulawesi system," in *Intelligent Technology and Its Applications (ISITIA), 2015 International Seminar on*, 2015, pp. 147-152: IEEE.
- [2] M. R. Djalal, H. Nawir, H. Setiadi, and A. Imran, "An Approach Transient Stability Analysis Using Equivalent Impedance Modified in 150 kV South of Sulawesi System," *Journal of Electrical and Electronics Engineering UMSIDA*, vol. 1, no. 1, pp. 1-7, 2016.
- [3] M. R. Djalal, H. Setiadi, D. Lastomo, and M. Y. Yunus, "Modal Analysis and Stability Enhancement of 150 kV Sulselrabar Electrical System using PSS and RFB based on Cuckoo Search Algorithm," *International Journal on Electrical Engineering and Informatics*, vol. 9, no. 4, pp. 800-812, 2017.
- [4] M. R. Djalal, M. Y. Yunus, H. Nawir, and A. Imran, "Application of Smart Bats Algorithm for Optimal Design of Power Stabilizer System at Sengkang Power Plant," *International Journal of Artificial Intelligence Research*, vol. 1, no. 2, 2017.
- [5] M. R. Djalal, M. Y. Yunus, H. Nawir, and A. Imran, "Optimal Design of Power System Stabilizer In Bakaru Power Plant Using Bat Algorithm," 2017, Power System Stabilizer; Algoritma Kelelawar; Speed; Overshoot; Settling Time. vol. 1, no. 2, p. 6, 2017-11-10 2017.
- [6] M. R. Djalal, M. Y. Yunus, H. Setiadi, and A. U. Krismanto, "Small-Signal-Stability Enhancement using a Power-System Stabilizer based on the Cuckoo-Search Algorithm against Contingency N-1 in the Sulselrabar 150-kV System," *Makara Journal of Technology*, vol. 22, no. 1, pp. 1-8, 2018.
- [7] M. Y. Yunus, M. R. Djalal, and Marhatang, "Optimal Design Power System Stabilizer Using Firefly Algorithm in Interconnected 150 kV Sulselrabar System, Indonesia," *International Review of Electrical Engineering (IREE)*, vol. 12, no. 3, pp. 250-259, 2017.
- [8] M. R. Djalal and Faisal, "Intelligent Fuzzy Logic-Cuckoo Search Algorithm Method for Short-Term Electric Load Forecasting in 150 kV Sulselrabar System," *Lontar Komputer: Jurnal Ilmiah Teknologi Informasi*, vol. 8, no. 3, pp. 154-165, 2017.

- [9] M. R. Djalal, "A modeling approach for short-term load forecasting using fuzzy logic type-2 in sulsebar system," *International Journal of Artificial Intelligence Research*, vol. 3, no. 1, 2018.
- [10] Tasrif, Suyono, Hadi, Hasanah, and R. Nur, "Economic Dispatch in 150 KV Sulsebar Electrical System Using Ant Colony Optimization," *IOSR Journal of Electrical and Electronics Engineering (IOSR-JEEE)*, vol. 13, no. 3, pp. 28-35, 2018.
- [11] S. Humena, S. Manjang, and I. C. Gunadin, "OPTIMIZATION ECONOMIC POWER GENERATION USING MODIFIED IMPROVED PSO ALGORITHM METHODS," *Journal of Theoretical and Applied Information Technology*, vol. 93, no. 2, 2016.
- [12] A. Mahor, V. Prasad, and S. Rangnekar, "Economic dispatch using particle swarm optimization: A review," *Renewable and Sustainable Energy Reviews*, vol. 13, no. 8, pp. 2134-2141, 2009/10/01/ 2009.
- [13] H. Z. Iqbal, A. Ashraf, and A. Ahmad, "Power economic dispatch using particle swarm optimization," in *Power Generation System and Renewable Energy Technologies (PGSRET), 2015*, 2015, pp. 1-7: IEEE.
- [14] M. M. Othman, M. A. I. Salim, I. Musirin, N. A. Salim, and M. L. Othman, "Dynamic Economic Dispatch Assessment Using Particle Swarm Optimization Technique," *Bulletin of Electrical Engineering and Informatics*, vol. 7, no. 3, pp. 458-464, 2018.
- [15] M. N. Alam, "State-of-the-Art Economic Load Dispatch of Power Systems Using Particle Swarm Optimization," *arXiv preprint arXiv:1812.11610*, 2018.
- [16] V. K. Jadoun, N. Gupta, K. Niazi, and A. Swarnkar, "Nonconvex economic dispatch using particle swarm optimization with time varying operators," *Advances in Electrical Engineering*, vol. 2014, 2014.
- [17] D. McLarty, N. Panossian, F. Jabbari, and A. Traverso, "Dynamic economic dispatch using complementary quadratic programming," *Energy*, vol. 166, pp. 755-764, 2019.

BIOGRAPHIES OF AUTHORS (10 PT)

	<p>8</p> <p>Marhatang was born in Soppeng-Indonesia on november 17, 1974. He received bachelor degree from Electronic Engineering Polytechnic Institute of Surabaya (Surabaya, Indonesia), majors in Electrical Engineering in 2002. Then, master degree from Hasanuddin University (Makassar, Indonesia), majors in Electrical Engineering in 2012. His research about, Power Electronic, Renewable Energy, and Electrical Power System. Now, He is lecturer at State Polytechnic of Ujung Pandang (PNUP).</p>
	<p>Muhammad Ruswandi Djalal was born in Makassar-Indonesia on march 11, 1990. He received bachelor degree from State Polytechnic of Ujung Pandang (Makassar, Indonesia), majors in Energy Generation engineering in 2012. Then, master degree from Sepuluh Nopember Institute of Technology, (ITS Surabaya, Indonesia), majors in Power System Engineering in 2015. His research about, Power System Operation and Control, Renewable Energy and Artificial Intelligent. Now, He is lecturer at State Polytechnic of Ujung Pandang (PNUP).</p>

Optimal Economic Dispatch Using Particle Swarm Optimization in Sulsebar System

ORIGINALITY REPORT

21 %
SIMILARITY INDEX

16 %
INTERNET SOURCES

13 %
PUBLICATIONS

13 %
STUDENT PAPERS

PRIMARY SOURCES

1 Submitted to Universitas Brawijaya 7 %
Student Paper

2 repository.ub.ac.id 4 %
Internet Source

3 repository.poliupg.ac.id 4 %
Internet Source

4 Submitted to Universiti Teknologi MARA 1 %
Student Paper

5 Submitted to Lassiter High School 1 %
Student Paper

6 A. M. Shiddiq Yunus, Muhammad Ruswandi Djalal. "Optimization of Economic Dispatch of 150 kV Sulsebar System using Lagrange Approach", 2019 International Conference on Technologies and Policies in Electric Power & Energy, 2019 1 %
Publication

7 Kennedy Okokpujie, John Abubakar, Samuel John, Etinosa Noma-Osaghae, Charles 1 %

Ndujiuba, Imhade Princess Okokpujie. "A secured automated bimodal biometric electronic voting system", IAES International Journal of Artificial Intelligence (IJ-AI), 2021

Publication

8

Muhammad Yusuf Yunus, Muhammad Ruswandi Djalal, Marhatang Marhatang. "Optimal Design Power System Stabilizer Using Firefly Algorithm in Interconnected 150 kV Sulselrabar System, Indonesia", International Review of Electrical Engineering (IREE), 2017

Publication

1 %

9

publikasi.mercubuana.ac.id

Internet Source

1 %

10

Submitted to Liverpool John Moores University

Student Paper

1 %

11

etd.auburn.edu

Internet Source

1 %

Exclude quotes Off

Exclude matches < 1%

Exclude bibliography On