

# smart\_waste\_management\_under\_a\_wireless\_communication\_system.pdf

*by*

---

**Submission date:** 30-Jul-2023 07:16PM (UTC-0700)

**Submission ID:** 2139171692

**File name:** smart\_waste\_management\_under\_a\_wireless\_communication\_system.pdf (1.89M)

**Word count:** 3325

**Character count:** 18158

# Designing smart waste management under a wireless communication system

Marwan Marwan

department of electrical engineering  
polytechnic state of Ujung Pandang  
Makassar, Indonesia  
marwan@poliupg.ac.id

Rusdi Wartapane

department of electrical engineering  
polytechnic state of Ujung Pandang  
Makassar, Indonesia  
rusdiwartapane@poliupg.ac.id

Nurhayati

department of electrical engineering  
polytechnic state of Ujung Pandang  
Makassar, Indonesia  
nurhayati\_tmj@poliupg.ac.id

Muhammad Ilyas Syarif

department of electrical engineering  
polytechnic state of Ujung Pandang  
Makassar, Indonesia  
ilyassyarif@poliupg.ac.id

Nur Aminah

department of electrical engineering  
polytechnic state of Ujung Pandang  
Makassar, Indonesia  
nuraminah\_elka@poliupg.ac.id

Ibrahim Abduh

department of electrical engineering  
polytechnic state of Ujung Pandang  
Makassar, Indonesia  
ibrahimabduh@poliupg.ac.id

**Abstract**—The purpose of this research is to design a smart waste management under a wireless communication system. To achieve this goal, a smart controller is designed by Arduino Uno and sensor ultrasonic to control the filling level of waste in the bin based on the real time. All data are collected and processed in a smart controller to inform all users accurately. Therefore, all users are able to easily and effectively access the information about the waste level accurately and in real time.

**Keywords**—controller, management, sensor, waste, wireless

## I. INTRODUCTION

Increasing population accompanied by rapid urbanization and industrialization has brought both positive and negative impacts of development. The positive impacts are an increase in economic activity, changing lifestyles and food consumption. On the negative side, modern society generates a high volume of waste. Consequently, it has brought huge environmental impacts, including causing serious problems for public health and the environment.

Human activities generate growing amounts of waste. There are many materials disposed of in general waste that can survive in the environment for a long time. According to [1] there are some environmental waste impacts, such as: pollution, global warming, water depletion and fossil resource depletion. The impact of waste not only affects human beings but can also significantly impact plants and animals. For example: disrupting animal reproduction due to rotting food in landfills and liquid pollution for plants due to toxic pollutants.

A number of researchers have been assessed to solve the problems above, such as: self-reported data and the optimization of disposal methods and recycling. To reduce waste, self-reported data is a potential means of reducing food waste. Author in [2] illustrated the effect of self-reporting on food waste generated by four hotel kitchens in Germany. In this study, a food waste tracking system has been developed to facilitate self-reporting. To improve the operational kitchen process, refilling the breakfast buffet with less food occurred during 30 minutes of breakfast time. This method has been utilised by kitchen staff over one year. In the first five months it was revealed that the quantities of food waste decreased and remained relatively constant for the next period. As a result, this method can significantly reduce the breakfast buffet leftovers. In addition, breakfast

buffet leftovers were reduced on average by more than 64.3% of mass.

According to [3] to reduce volume of high level waste an optimization disposal method is required. In this study, the disposal methods accompanied by some scenarios are optimized. The horizontal and vertical emplacements concept was adopted to investigate the level of waste reduction. Based on the result of optimization, the horizontal emplacement can reduce 28% of the repository footprint in direct disposal. Moreover, the footprint can be reduced up to 19% by extending the cooling time 40 years before disposal. In addition, this disposal method can be applied to manage bio-medical waste. According to [4] this disposal method is safe and hygienic for bio-medical waste. This is because this assessment was evaluated according to a number categories, such as: social acceptance, technology, environmental protection, cost, noise and health risks.

Other research has been developed by [5] by applying innovative technology for recycling concrete waste. This paper illustrates the advanced dry recovery and heating air classification system technologies to recycle end-of-life concrete to be coarse, fine and ultrafine particles. Based on the research results, both methods can potentially reduce the heavy traffic related to construction activities so that it can support the increasing sustainability and greening of the construction sector. These technologies have been effectively applied as they are designed to be mobile.

In addition, this recycling method has been developed by [6] to ensure a circular economy for plastic. Ten recycling technologies have been applied to evaluate the environmental impact of 25 polymer models. The life cycle assessment (LCA) model is designed to simulate realistic plastic challenges. The research results indicated that the LCA model in Europe can reduce 73% of CO<sub>2</sub> emissions from plastic.

However, the proposed method has developed an innovative technology to solve the impact of waste on the environment, and humankind's sustainability. The proposed method allowed the whole community, waste officers and local government to manage and control waste levels in smart bins.

## II. RELATED WORK

### A. Waste Management system

A number of research studies have assessed waste management systems. For example: an intelligent waste management system is based on deep learning and Internet of things (IoT) paradigm [7]. The proposed model describes the architectural design of smart bins with using a microcontroller accompanied by multiple sensors. For monitoring and processing data with real time, the IoT was required to control all data from anywhere through an application under an android program. In this research, a convolutional neural network was applied to sort digestible and indigestible waste. The accuracy of waste labels has been developed by a sensor data and system usability scale. The result of research indicated that the accuracy of the proposed model was achieved at 95.3125 %.

Author in [8] applied the reliability analysis method to control the uncertainties for a multiple stage solid waste management system. To optimize the reliability system, an optimization model was used to optimize the allocation of waste treatment demand between facilities. The proposed method was applied in Hong Kong to investigate the effectiveness of this methodology. A case study was examined to evaluate the risk of the solid waste management system. As a result, under the optimization method, the risk can be minimized and provide the best solution for sustainability.

According to [9] waste management is an important step towards an energy and material sustainable society. The issue of municipal waste is a huge serious problem in the world. The possible solution to get an efficient waste management is the Pay-As-You-Throw model. This program considers each agent responsible for reducing waste production. The proposed method applied an incentive mechanism to non-domestic sectors, such as: hotel enterprises in Funchal Portugal.

Other researchers applied Household electronic waste management in Malaysia [10]. Under the IoT paradigm, waste management was applied to collect electronic waste. In order to support the smart city concept for sustainability, this method applied the e-waste program for every house, namely: using an e-waste collection box and e-waste level sensor. To simplify the collection of data, a mobile application was developed for all users. The results indicated that the proposed system was successful and effective for collecting electronic waste in Malaysia.

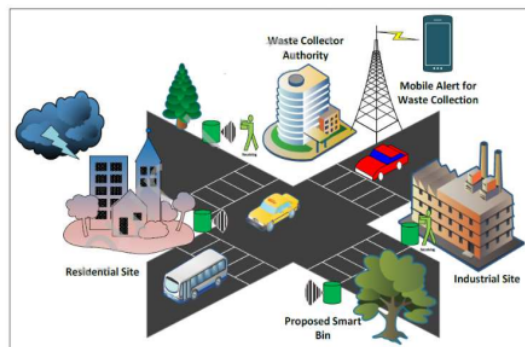


Fig. 1 An example of waste management system [11]

Figure 1 above illustrates an example of a waste management system. The proposed method illustrates a complete scenario of smart waste management under a smart garbage management system. This method has been proposed by [11] with applied four system under an Arduino Uno microcontroller. The function of the Arduino Uno is to synchronize each task with the other systems. The four systems are identification, an automated lid, display and communication systems.

### B. Wireless communication system

A wireless communication system transfers electromagnetic information between two or more points without an applied electrical conductor. Today, a wireless communication system is not just applying to send general information but also to use this to support some intelligent communication in transmitting physical or chemical variable data. The following research illustrates how the wireless communication system has been applied to support the waste management system.

Ref [12] illustrated an intelligent concept to monitor the amount of waste in disposal of integrated solar energy. A wireless communication system was applied to send information about the level of waste in the container. To simplify communication, all smart bins had installed a Wi-Fi hotspot. Therefore, it is easy to access data for any type container, such as: small and large containers. The result of the research indicated that intelligent concepts can reduce the operation costs by up to 80%, assist waste officers in utilizing fewer trucks, reduce fuel consumption and take less time for waste collection.

Ref [13] developed a new concept of waste management for smart cities with integration to a wireless cloud. Under an applied wireless system, the proposed model could monitor the temperature, humidity, smoke fire detection and volume of waste in the bin. All communication from the sensor to central station is conducted by existing GSM/GPRS wireless infrastructure. The result of research indicated that the proposed concept could minimize the cost and efficiency in solving the waste problem in modern society.

Other research has been developed by [14] to monitor garbage under a wireless integrated to IoT. To avoid excessive operation costs and direct contact with the employees who monitor garbage, remote monitoring by software system is applied. The technical proposal can improve the intensity and efficiency of the waste monitoring system.

## III. PROPOSED DESIGN

To design a smart waste management system, four systems are synchronized by the control system. These four systems are: smart bin, control system, mobile phone and server. In addition, to create the control system, two main components are required: Arduino Uno and sensor ultrasonic. Figures 2 and 3 illustrate the kind of components used to manufacture a control system.

### A. Arduino Uno

According to [15] Arduino is a single board micro-controlled based on the ATMEGA 328 chip created to process an applied electronics system in multidisciplinary research. The Arduino board was chosen to control and synchronize all systems as it is popular, economical, and

easy to implement and <sup>12</sup> an efficient open-source single board microcontroller. The Arduino has a communication protocol to connect with a computer system. Figure 2 (below) illustrates the Arduino board used in this study.

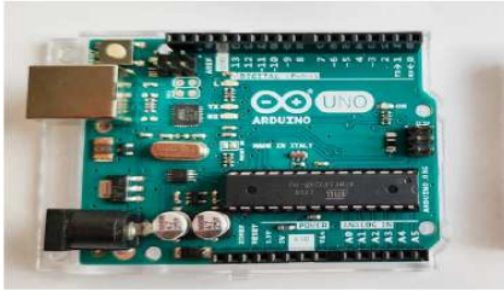


Fig. 2 Arduino Uno board [16]

### B. Ultrasonic Sensor

Author in [15] sensor is a device which permits the measurement of physical or chemical variables transforming to be an electrical signal. In this study, an ultrasonic sensor was applied to measure the position or level of waste in the bin. This is because the ultrasonic sensor has a high accuracy in millimetres to measure the position and level of physical objects [17]. In addition, ultrasonic sensors are usually used to sense automation to measure distance, position and level [18]. The kind of ultrasonic sensor applied in this research is SRF08, as illustrated in Figure 3 below.

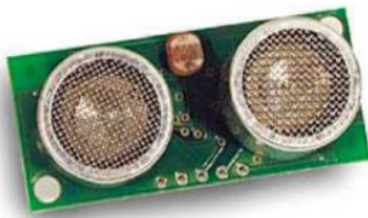


Fig. 3 Ultrasonic sensor SRF08[18]

### C. Control design

Figure 4 (below) illustrates that control systems are designed to control and detect the position of waste levels in the smart bin. The task of the control system is not just to measure the level or detect waste in the bin but also to send a message directly to a mobile phone and website through an android application. To accurately gauge the level, the control system position is located in the bin. In addition, to protect this system, users put it on the side of the safety box integrated with the bin.



Fig. 4 The control system <sup>15</sup>

The flowchart diagram of the proposed method is shown in Figure 5 below.

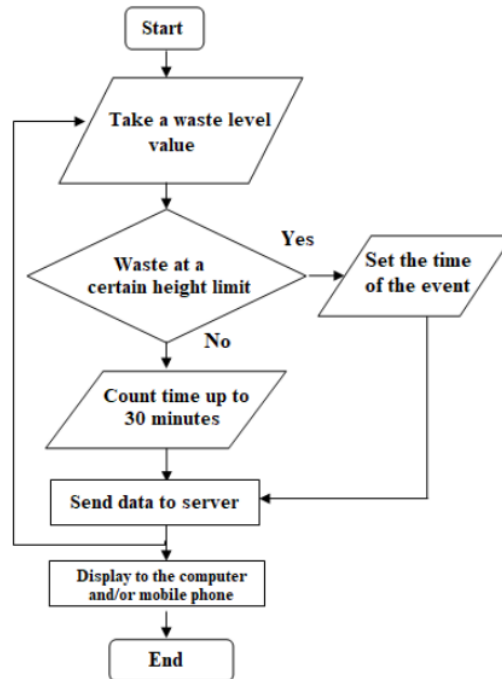


Fig. 5 Flowchart diagram

## IV. RESULT AND DISCUSSION

### A. Architecture design

Figure 6 (below) illustrates the architectural design of a smart waste management system. <sup>20</sup>

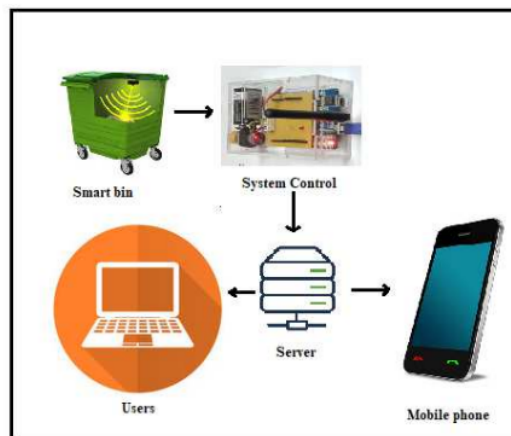


Fig. 6 The architectural design <sup>11</sup>

Figure 6 (above) illustrates that the level of waste in the smart bin is controlled by control system. The control system sends information to the user regarding the position of the waste level. This is to make it easy for the users to control/monitor according to the tools available, for example:

mobile phones or computers. This is also to make it easier for the local government and waste officer to control the smart bin based on the status of the bin. In this study, the status of bin is full or not full. If the status is full then the waste officer picks up the waste to avoid garbage buildup, maximizes the pick-up time and reduces operation costs. In addition, the proposed method can assist all consumers to recognize the status of the waste bin when they want to drop their waste near their homes.

To synchronize between all functions and users, a microcontroller is used to send information for all users. All data are stored and the process under the existing control system sends the bin status to the users. There are two kinds of tools for all users to get information of bin status, such as web interface and a short message service.

### B. Web interface

Figure 7 (below) illustrates a web interface if the consumer accesses via computer. In this web interface, there are two main menus available: the main menu and the announcement. In the main menu there are three options available: Home, news and monitoring. The home tab is the basic unit of the application (the default menu in this system). News consists of notification from the operator about some information related to the waste management system. Tab monitoring contains the main task of the system. All users can access the status of the bin by this tab.

In this study, the web interface is applied to bring information to all users that can be easily accessed regarding the status of the container. There are two kind of bin status: "PENUH" (known as 'Full') and "BELUM PENUH" ('not yet full'). 'Full' occurs when the volume of waste has reached the maximum level. Alternatively, when the volume of waste is under the maximum level, it is called 'not yet full'.

No	Waktu Alarm	Status	Lokasi
1	2017-10-15 16:50:36	PENUH	A12
2	2017-10-15 16:49:41	BELUM PENUH	A12
3	2017-10-15 16:45:38	PENUH	A12
4	2017-10-15 16:43:30	BELUM PENUH	A12
5	2017-10-15 16:43:09	PENUH	A12
6	2017-10-15 16:39:27	BELUM PENUH	A12
7	2017-10-15 16:39:12	PENUH	A12
8	2017-10-15 16:38:01	BELUM PENUH	A12
9	2017-10-15 16:35:58	PENUH	A12
10	2017-10-15 16:34:07	BELUM PENUH	A12
11	2017-10-15 16:23:40	BELUM PENUH	A12
12	2017-10-15 16:23:13	PENUH	A12
13	2017-10-15 16:22:53	BELUM PENUH	A12
14	2017-10-15 16:19:34	PENUH	A12
15	2017-10-15 16:18:41	BELUM PENUH	A12
16	2017-10-15 16:16:20	PENUH	A12
17	2017-08-01 07:49:41	BELUM PENUH	A12
18	2017-08-01 07:49:20	PENUH	A12

Fig. 7 Web interface design

### C. Short message service

Figure 8 (below) illustrates the result of monitoring by a mobile phone.

Similar to the result above, the status of the smart bin is sent directly to the mobile phone if the smart bin status is PENUH. On the other hand, the consumer can recognize the status of the bin if the smart bin is still available with "BELUM PENUH".

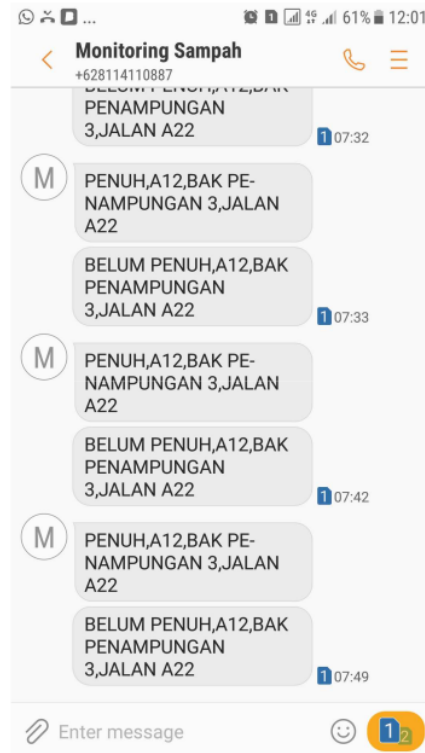


Fig. 8 A sample message on a mobile phone

Based on the Figure above, all consumers are allowed to check the status of the bin in real time for every street. Therefore, it would assist all users to monitor the status of the bin directly. In addition, it would be assist the waste officer to directly control and pick up the bin if the status is full. As a result, it can protect the environment from the negative impact of waste and reduce many different environmental problems due to air and landfill pollutions.

### V. CONCLUSION

The results of this research illustrate that a control system can control the waste level in the bin based on real time. A smart controller is designed by Arduino Uno and ultrasonic sensor not only measures the level or detects waste in the bin but also sends a message directly to a mobile phone and website through an android application. Consequently, all users can get information easily and accurately regarding the bin status (PENUH or BELUM PENUH). In addition, it is recommended to develop this proposed research to support developing smart cities in the future.

The authors would like to take this opportunity to thank the Ministry of Education, Culture, Research and Technology of the Republic of Indonesia and Polytechnic State of Ujung Pandang Makassar Indonesia.

## REFERENCES

1. D. Tonini, P. F. Albizzati, and T. F. Astrup, "Environmental impacts of food waste: Learnings and challenges from a case study on UK," *Waste Management*, vol. 76, pp.744-766, 2018.
2. D. Leverenz, G. Hafner, S. Moussawel, M. Kranert, Y. Goossens, and T. Schmidt, "Reducing food waste in hotel kitchens based on self-reported data," *Industrial Marketing Management*, vol. 2020.
3. Y. Fukaya, M. Goto, H. Ohashi, T. Nishihara, Y. Tsubata, and T. Matsumura, "Optimization of disposal method and scenario to Reduce High Level Waste Volume and Repository Footprint for HTGR," *Annals of Nuclear Energy*, vol. 116, pp.224-234, 2018.
4. S. Narayanamoorthy, V. Annapoorani, D. Kang, D. Baleanu, J. Jeon, J. V. Kureethara, and L. Ramya, "A novel assessment of bio-medical waste disposal methods using integrating weighting approach and hesitant fuzzy MOOSRA," *Journal of Cleaner Production*, vol. 275, 2020.
5. A. T. Gebremariam, F. D. Maio, A. Vahidi, and P. Rem, "Innovative technologies for recycling End-of-Life concrete waste in the built environment," *Resources, Conservation and Recycling*, vol. 163, 2020.
6. A. E. Schwarz, T. N. Lighthart, D. G. Bizarro, P.D. Wild, B. Vreugdenhil, and T. V. Harmelen, "Plastic recycling in a circular economy; determining environmental performance through an LCA matrix model approach," *Waste Management*, vol. 121, pp.331-342, 2021.
7. M. W. Rahman, R. Islam, A. Hasan, N. I. Bithi, M. M. Hasan, and M. M. Rahman, "Intelligent waste management system using deep learning with IoT," *Journal of King Saud University - Computer and Information Sciences*, vol. 2020.
8. C. Cheng, R. Zhu, R. G. Thompson, and L. Zhang, "Reliability analysis for multiple-stage solid waste management systems," *Waste Management*, vol. 120, pp.650-658, 2021.
9. L. Alves, S. Silva, and I. Soares, "Waste management in insular areas: A Pay-As-You-Throw system in Funchal," *Energy Reports*, vol. 6, pp.31-36, 2020.
10. K. D. Kang, H. Kang, I.M.S.K. Ilankoon, and C. Y. Chong, "Electronic waste collection systems using Internet of Things (IoT): Household electronic waste management in Malaysia," *Journal of Cleaner Production*, vol. 252, 2020.
11. M. U. Sohag and A. K. Podder, "Smart garbage management system for a sustainable urban life: An IoT based application," *Internet of Things*, vol. 11, 2020.
12. H. N. Saha, S. Auddy, S. Pal, S. Kumar, S. Pandey, R. Singh, and A. K. Sing, "Waste management using Internet of Things (IoT)," 8th Annual Industrial Automation and Electromechanical Engineering Conference, Bangkok, Thailand, vol. 2017.
13. M. Talha, A. Upadhyay, R. Shamim, and M. S. Beg, "A cloud integrated wireless garbage management system for smart cities," *International Conference on Multimedia, Signal Processing and Communication Technologies*, Aligarh, India, vol. 2017.
14. Yanglu, A. Yadav, and A. Khan, "Internet of Things Based Wireless Garbage Monitoring System," *Third International conference on I-SMAC*, Palladam, India, India, vol. 2019.
15. F. O. Zamorano, J. M. Jerez, J. Subirats, I. Molina, and L. Franco, "Smart sensor/actuator node reprogramming in changing environments using a neural network model," *Engineering Applications of Artificial Intelligence*, vol. pp.1-10, 2014.
16. P. Bistak, "Arduino Support for Personalized Learning of Control Theory Basics," *IFAC-Papers OnLine*, vol. 52, pp.217-221, 2019.
17. K. G. Panda, D. Agrawal, A. Nshimiyimana, and A. Hossain, "Effects of environment on accuracy of ultrasonic sensor operates in millimetre range," *Perspectives in Science*, vol. 8, pp.574-576, 2016.
18. L. Koval, J. Vaňuš, and P. Bilik, "Distance Measuring by Ultrasonic Sensor," *IFAC-Papers OnLine*, vol. 49, pp.153-158, 2016.

ORIGINALITY REPORT

16%

SIMILARITY INDEX

11%

INTERNET SOURCES

13%

PUBLICATIONS

7%

STUDENT PAPERS

PRIMARY SOURCES

1	Marwan Marwan, Kurniawati Naim, Sarma Thaha, Sofyan Sofyan, Ahmad Rosyid Idris, Andarini Asri. "Integrating on-site renewable energy to innovative EDRP in reducing electricity peak demand", 2021 International Conference on Artificial Intelligence and Computer Science Technology (ICAICST), 2021 Publication	3%
2	Submitted to Universitas Dian Nuswantoro Student Paper	3%
3	<a href="http://eprints.utm.my">eprints.utm.my</a> Internet Source	1%
4	<a href="http://ijareeie.com">ijareeie.com</a> Internet Source	1%
5	<a href="http://www.researchgate.net">www.researchgate.net</a> Internet Source	1%
6	Jeni Moni, Pramod Mathew Jacob, Shital Pawar, Renju Rachel Varghese, Prasanna Mani, Girish K K, Graham G. "An Intelligent Smart Bin System for Solid Waste	1%

Management in Smart Cities", 2022  
International Conference on Decision Aid  
Sciences and Applications (DASA), 2022

Publication

---

7	<a href="https://pubmed.ncbi.nlm.nih.gov">pubmed.ncbi.nlm.nih.gov</a> Internet Source	1 %
8	<a href="http://jopss.jaea.go.jp">jopss.jaea.go.jp</a> Internet Source	1 %
9	<a href="http://d-nb.info">d-nb.info</a> Internet Source	1 %
10	<a href="http://ijece.iaescore.com">ijece.iaescore.com</a> Internet Source	1 %
11	<a href="http://www.mdpi.com">www.mdpi.com</a> Internet Source	1 %
12	Francisco Ortega-Zamorano, José M. Jerez, José L. Subirats, Ignacio Molina, Leonardo Franco. "Smart sensor/actuator node reprogramming in changing environments using a neural network model", Engineering Applications of Artificial Intelligence, 2014 Publication	1 %
13	Cheng Cheng, Rui Zhu, Russell G. Thompson, Lihai Zhang. "Reliability analysis for multiple-stage solid waste management systems", Waste Management, 2021 Publication	1 %

---



14

[link.springer.com](https://link.springer.com)

Internet Source

&lt;1 %

15

Nezam Sarmadi, S. Arash, Ahmad Salehi Dobakhshari, Sadegh Azizi, and Ali Mohammad Ranjbar. "A Sectionalizing Method in Power System Restoration Based on WAMS", IEEE Transactions on Smart Grid, 2011.

Publication

&lt;1 %

16

"Table of Content", 2021 7th International Conference on Wireless and Telematics (ICWT), 2021

Publication

&lt;1 %

17

Marwan Marwan, Muhammad Dihyah Marwan, Muhammad Anshar, Jamal Jamal, Aksan Aksan, Apollo Apollo. "Applied TOU program to control electricity peak demand under demand side response model", 2021 International Conference on Artificial Intelligence and Mechatronics Systems (AIMS), 2021

Publication

&lt;1 %

18

[biblioteca.inatel.br](https://biblioteca.inatel.br)

Internet Source

&lt;1 %

19

[rdreview.jaea.go.jp](https://rdreview.jaea.go.jp)

Internet Source

&lt;1 %

20

Inna Sosunova, Jari Porras. "IoT-Enabled Smart Waste Management Systems for Smart Cities: A Systematic Review", IEEE Access, 2022

Publication

<1 %

---

Exclude quotes On

Exclude matches Off

Exclude bibliography On